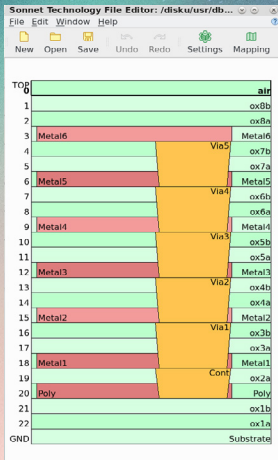
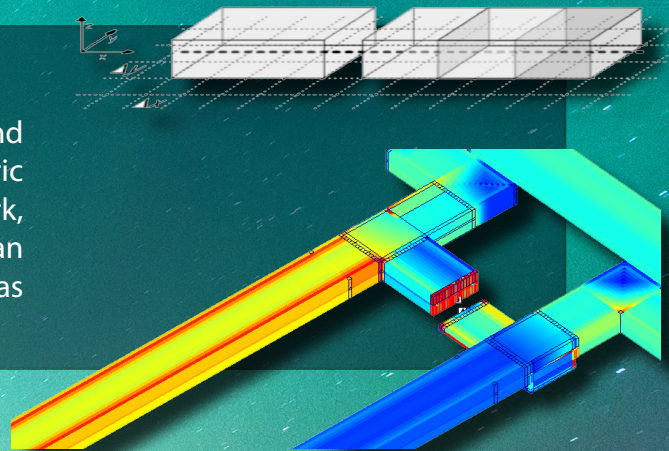


Introducing v18 SONNET®

Sonnet's new v18 builds upon the v17 revolution, adding ground breaking new technologies, enhancements, and robustness to the gold standard product from the world's most tenured brand in EM simulation.

TrueVolume™ 3D Subsections

TrueVolume is a major breakthrough both for Sonnet and for em simulation. It allows the use of 3D, fully-volumetric subsections within the context of a 3D planar framework, so that volumetric behavior in all three dimensions can improve circuit modeling. It is particularly useful in areas with strong coupling between thick cross-sections.

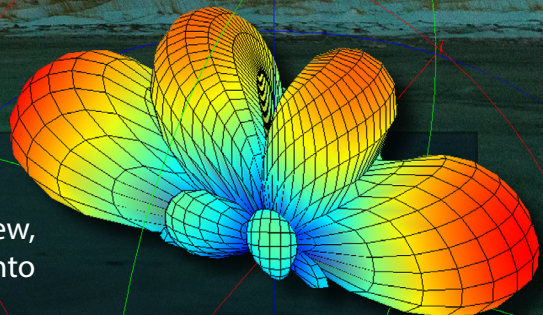


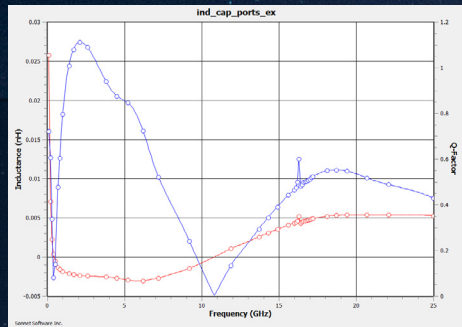
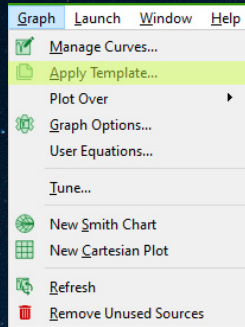
Sonnet Technology File (.stf) Editor

The Sonnet Technology File (.stf) editor is a new and separate utility, where users may create and edit technology stack files directly without needing to open a Sonnet Layout window. The mapping feature further allows users to map CAD mask layers to Sonnet Technology Layers. Double-clicking an .stf file in explorer will automatically launch the editor.

3D Antenna Pattern Viewer

With the Antenna Pattern product, users can now plot, view, rotate, and zoom antenna patterns in 3D, for more insight into antenna designs.

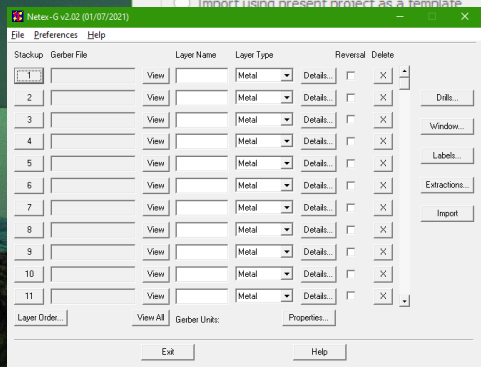
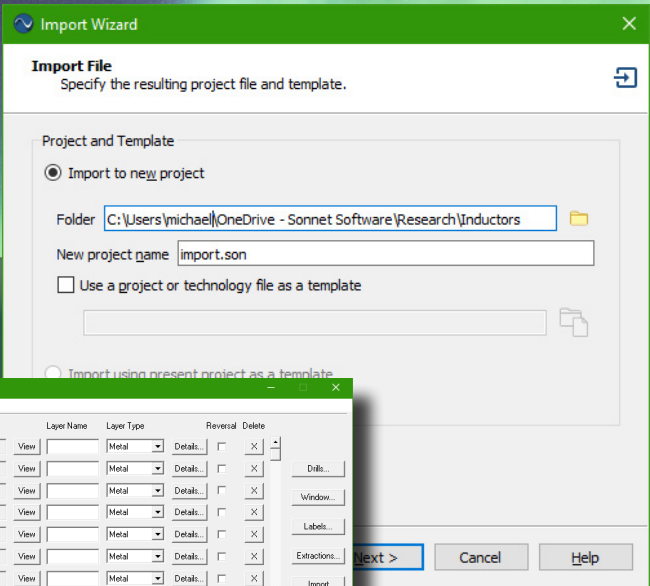




Graph and Pattern Templates

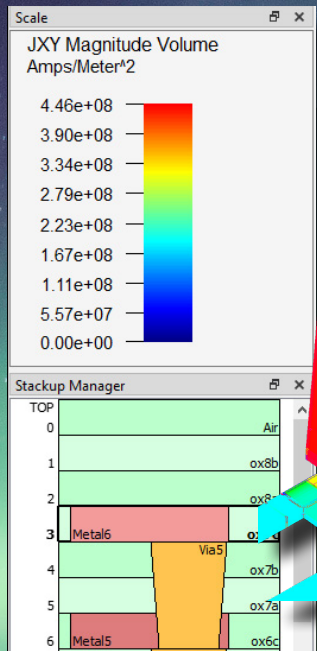
Graph and antenna pattern settings can be saved and loaded as *Templates*, making it quick, easy, and reliable to view and compare like-results between designs, projects, and iterations.

| Name | Date modified | Type | Size |
|------------------|-------------------|-------------------|--------|
| Cartesian_Sn1_dB | 5/30/2021 8:36 PM | Sonnet Graph File | 120 KB |
| Cartesian_Snn_dB | 5/30/2021 8:36 PM | Sonnet Graph File | 120 KB |
| L_and_Q | 5/30/2021 8:36 PM | Sonnet Graph File | 7 KB |
| Smith_Sn1 | 5/30/2021 8:36 PM | Sonnet Graph File | 137 KB |
| Smith_Snn | 5/30/2021 8:36 PM | Sonnet Graph File | 137 KB |



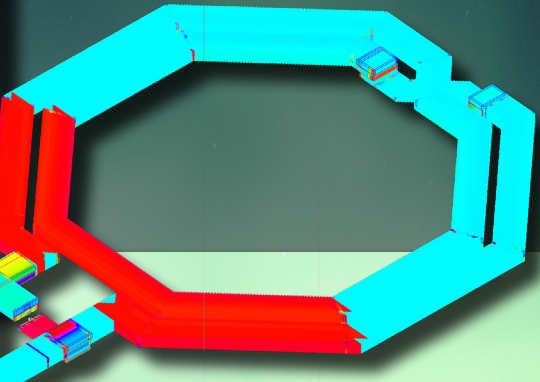
ODB++ Improvements

The ODB++ translator now supports ODB++ 7.x and 8.x. databases, greatly increasing the versatility of ODB++ workflows.



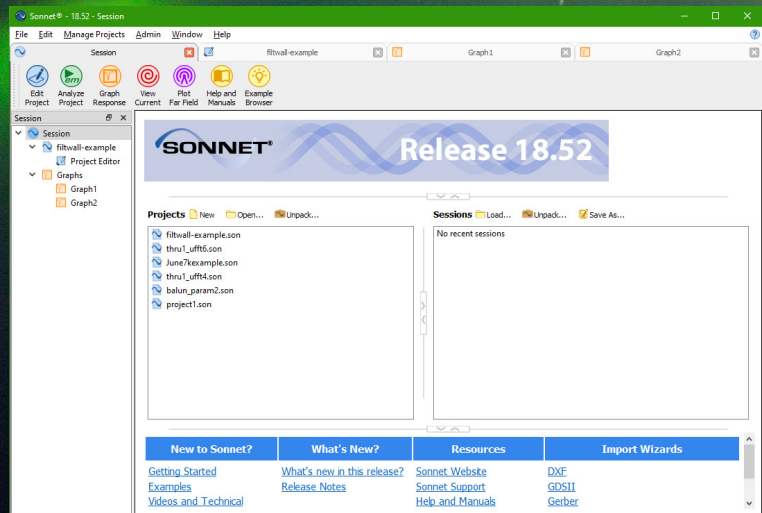
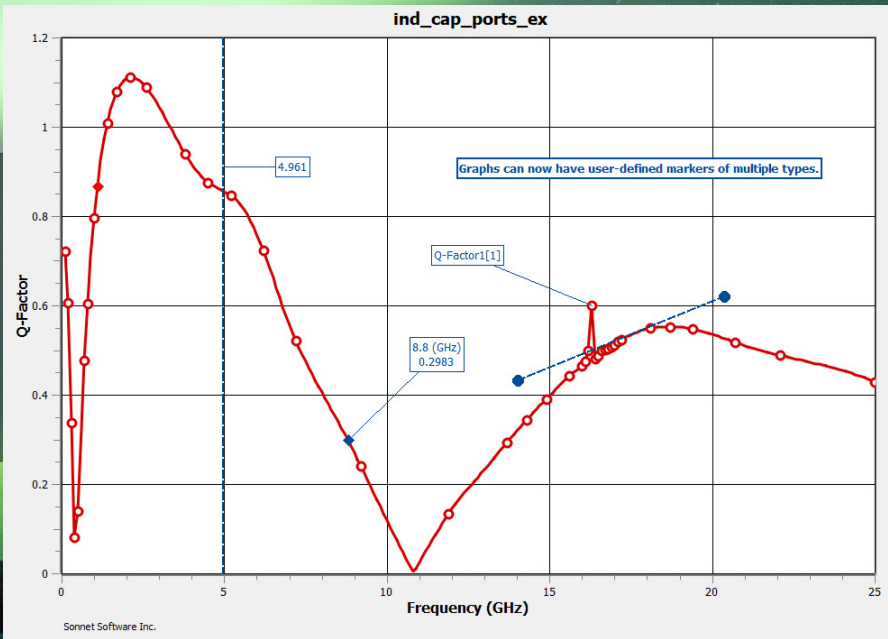
Volumetric Current and Current Phase Plots

Two exciting improvements to the current density window. First, to complement the TrueVolume subsections, it is now possible to plot volume currents in the current density viewer. Second, users may now plot current phase in their simulations.



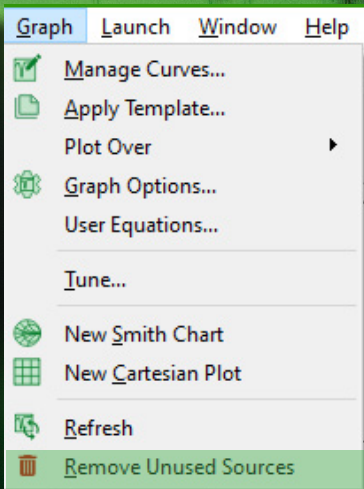
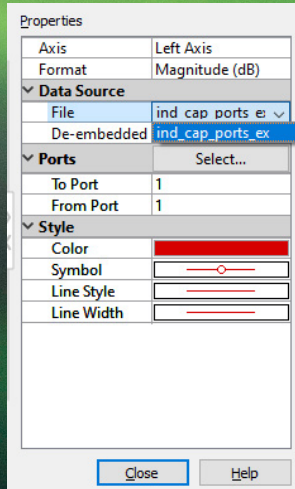
Line Segment Markers

In addition to existing marker types, graphing has been expanded to include line-segments. Simply right click where you want to place a marker and select *Add Marker->Line Segment Marker*.



Updated Home Screen

Pick up where you left off! Sonnet's updated welcome screen keeps track of recent projects right beside the session manager. Everything you need to get going welcomes you when you open the tool.



Unused Source Removal

With many projects and data sources available, it is easy to become overwhelmed when plotting. The *Graph->Remove Unused Sources* command helps to clean up the data-source menu while plotting.

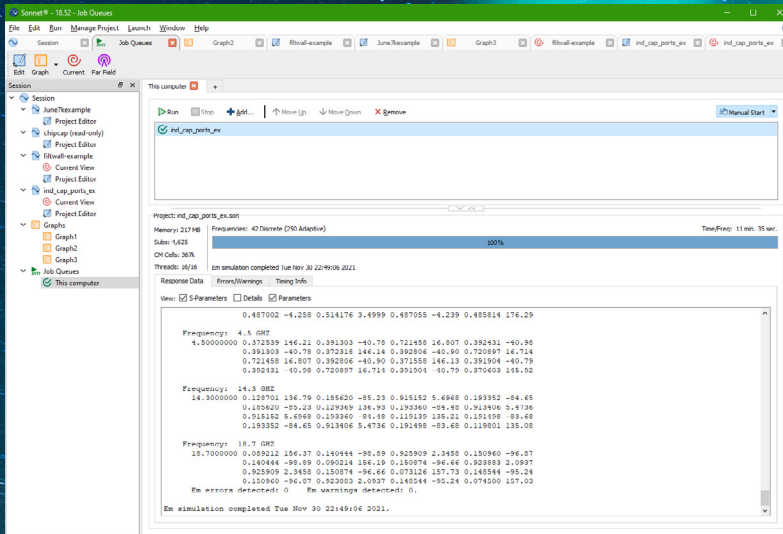
Sonnet Technology File (.stf) Improvement

Sonnet Technology File (.stf) now supports *purposes* with respect to layer mapping.

☐ Only show used layer/purposes

| Used | CAD Layer | CAD Purpose | Tech Layer |
|------|-------------|-------------|--------------|
| Used | Metal5 | drawing | Metal5 |
| Used | Metal6 | drawing | Metal6 |
| Used | Via5 | drawing | Via5 |
| Used | viadummy | drawing | <Not Mapped> |
| Not | BJTdummy | drawing | <Not Mapped> |
| Not | Bondpad | drawing | <Not Mapped> |
| Not | CapMetal | drawing | <Not Mapped> |
| Not | Capdum | drawing | <Not Mapped> |
| Not | Cont | drawing | Cont |
| Not | DIOdummy | drawing | <Not Mapped> |
| Not | IND2dummy | drawing | <Not Mapped> |
| Not | IND3dummy | drawing | <Not Mapped> |
| Not | INDdumVlcRF | drawing | <Not Mapped> |
| Not | INDdummy | drawing | <Not Mapped> |
| Not | JVAR1dummy | drawing | <Not Mapped> |
| Not | IVAR2dummy | drawing | <Not Mapped> |

Help OK Cancel

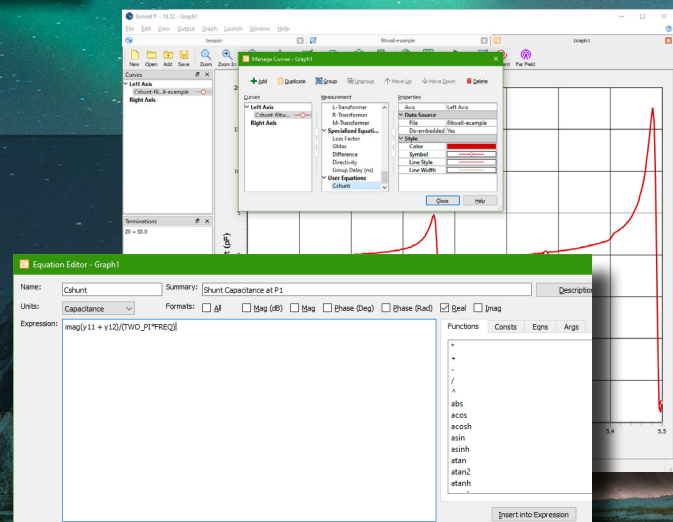


Enhanced Stability

Dozens of improvements, enhancements, and bug-fixes have been made for the best user experience. A comprehensive list can be found here: <https://www.sonnetsoftware.com/support/sonnet-suites/release-notes-1852.html>

Graphing Equation Editor

From the graphing menu, users may click Graph -> User Equations to manage their equations, now including the ability to add/edit equations with a new and easy to use window.



Experience Version 18:

www.sonnetsoftware.com
info@sonnetsoftware.com
(877) 7 SONNET
(315) 453 3096

SONNET[®]
PRECISION ELECTROMAGNETICS